



LENNOX' ELITE® SERIES

Home Comfort Systems



XP16

High-efficiency, two-stage comfort

Compatible with the exclusive Humiditrol® whole-home dehumidification system—indoor air quality you can feel



HOME COMFORT SYSTEMS
Innovation never felt so good.™



Innovation never felt so good.™

Elite® Series XP16 Heat Pump

Two-stage operation optimizes cooling performance, resulting in more even temperatures and lower utility bills

Efficient design can result in significant energy savings

Ozone-responsible R410A meets the EPA's (Environmental Protection Agency) most stringent environmental guidelines

Compatible with the exclusive Humiditrol® whole-home dehumidification system

SmartHinge™ louvered access panels provide improved coil protection and fast, efficient servicing

ENERGY STAR® qualified

Want to feel more comfortable at home? With the XP16 heat pump, you can feel more comfortable, without feeling the pinch of high utility bills. That's because it has two levels of cooling and heating for a higher level of efficiency.

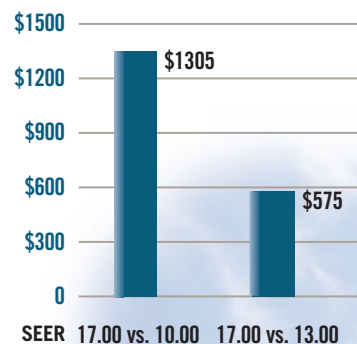
MAXIMUM COMFORT WITH MINIMUM WASTED ENERGY

With its two-stage design, the XP16 makes the distinction between mild and extreme-weather days, using only the energy necessary to keep you comfortable. It runs mostly at low stage, so you can avoid high utility bills. And, when you combine the XP16 with a *SignatureStat*™ control and Humiditrol® dehumidification system, you can also find relief from high humidity.

Efficient Can save you hundreds of dollars each year on utility bills

The XP16 keeps you comfortable, while keeping your energy costs down. With cooling efficiencies of up to 17.00 SEER and heating efficiencies of up to 8.70 HSPF, it can significantly lower your utility bills.

5-YEAR COOLING SAVINGS



17.00 SEER XP16 heat pump, compared to older, less efficient units



Choosing an ENERGY STAR® product can help you improve comfort and save money. Get details at www.itpaystolive.com.

This chart compares the 5-year savings you can expect from an XP16 heat pump vs. units with lower efficiency ratings. The regions used to calculate household fuel and utility costs reflect a cross-section of cities in the U.S. using 2006 Department of Energy national average energy rates. In addition to geography, cooling costs are based on 3-ton capacity specifications, with 1,600 cooling hours per year. Your actual costs will vary depending on the weather, local fuel rates, systems settings and your personal lifestyle.

EFFICIENCY RATING

Up to 17.00 SEER (Seasonal Energy Efficiency Ratio) and 8.70 HSPF (Heating Season Performance Factor).

WARRANTY*

10-year limited warranty on compressor.

5-year limited warranty on all remaining covered components.



The XP16 heat pump can be combined with a gas furnace to enhance comfort and fuel efficiency by alternating between electric and gas heat, optimizing energy use and minimizing heating costs.

*Applies to residential applications only. See actual warranty certificate for details.

Customizable **Compatible with the new Humiditrol® whole-home dehumidification system**

The XP16 gives you the flexibility to choose a Humiditrol® system for improved comfort and indoor air quality. Patented Humiditrol technology helps reduce humid conditions in the home, reducing the opportunity for mold and mildew growth.

INNOVATIVE FEATURES FOR ENHANCED COMFORT AND EFFICIENCY

Precision-Balanced Direct-Drive Fan –

Delivers quiet operation.

High-Efficiency Outdoor Coil –

Provides exceptional heat transfer and low air resistance for high-efficiency operation.

Two-Stage Scroll Compressor –

Operates at low stage most of the time for quieter, more efficient performance. Plus, it cools your home using the ozone-responsible R410A refrigerant.

Durable Steel Cabinet –

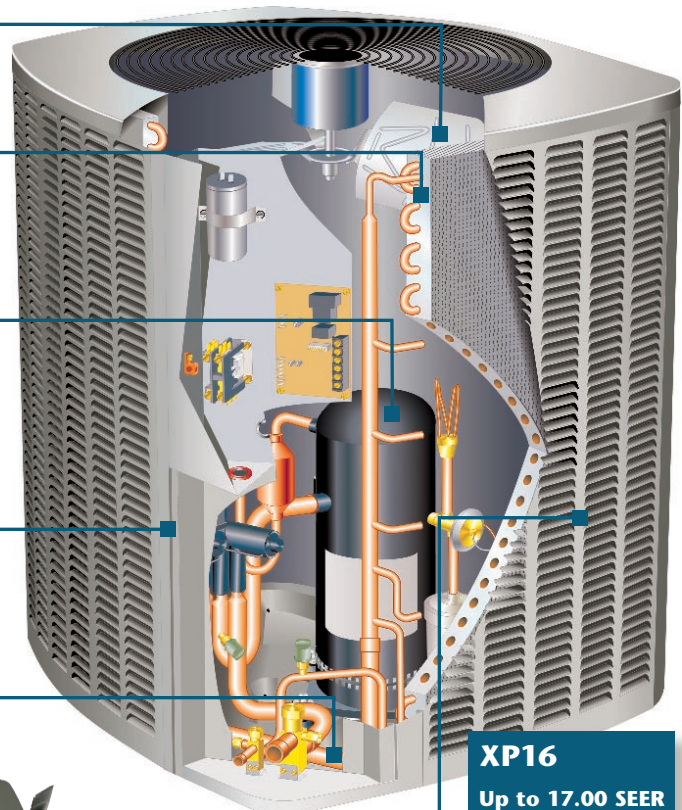
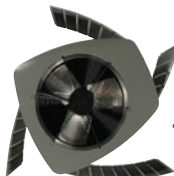
Made to last with an attractive, high-quality textured paint finish.

Drainage Holes –

Prevent damaging moisture from collecting inside the basepan.

SmartHinge™ Louvered Coil Protection –

Allows quick, easy access to interior components from all sides, so the unit can be serviced in minimal time.

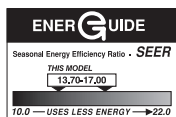


XP16
Up to 17.00 SEER
and 8.70 HSPF
ENERGY STAR®
qualified

Elite® Series XP16 Specifications

XP16	024	036	048	060
SEER	Up to 17.00	Up to 16.00	Up to 16.20	Up to 15.70
HSPF	Up to 8.50	Up to 8.50	Up to 8.20	Up to 8.70
Sound Rating-dB	74	76	76	78
Dimensions HxWxD (in.)	31 x 27 x 28	35 x 30-1/2 x 35	45 x 30-1/2 x 35	39 x 30-1/2 x 35
HxWxD (mm)	787 x 686 x 711	889 x 775 x 889	1143 x 775 x 889	991 x 775 x 889

Note: Due to Lennox' ongoing commitment to quality, all specifications, ratings and dimensions are subject to change without notice.

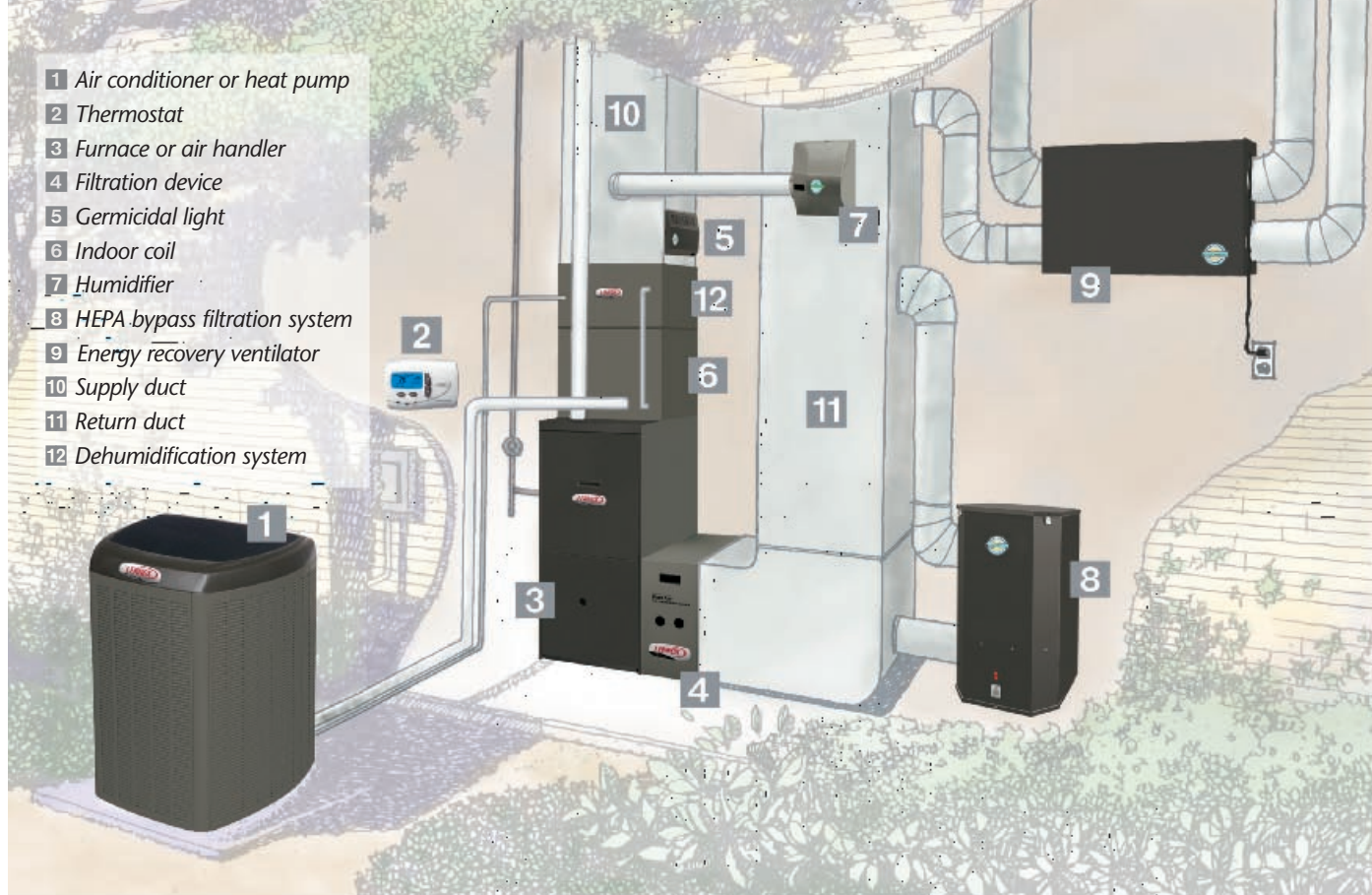


Proper sizing and installation of equipment is critical to achieve optimal performance. Split system air conditioners and heat pumps must be matched with appropriate coil components to meet ENERGY STAR® criteria. Ask your Lennox dealer for details, or visit www.energystar.gov.



Lennox is proud of the fact that these products have earned the Good Housekeeping Seal.





CUSTOMIZE YOUR COMFORT

Lennox® heating, cooling and Healthy Climate® indoor air quality products are designed to provide efficient, economical comfort—not only as individual units, but also together as an integrated system. This combined network of products delivers on every comfort count, from consistent temperatures and balanced humidity to improved indoor air quality.

DEALERS YOU CAN COUNT ON

Choosing the right dealer for your home's heating, cooling and air quality needs is every bit as important as choosing the right brand. We think you'll agree our independent dealers are a big reason you can count on quality customer service whenever you call. Your Lennox dealer's dedication to quality shows in his knowledge, training and expertise in designing the right system for your home, installing it properly and keeping it running perfectly for many years to come.



HOME COMFORT SYSTEMS
Innovation never felt so good.™

© Lennox Industries Inc. 2006

Visit us at www.lennox.com, or contact us at 1-800-9-LENNOX.